

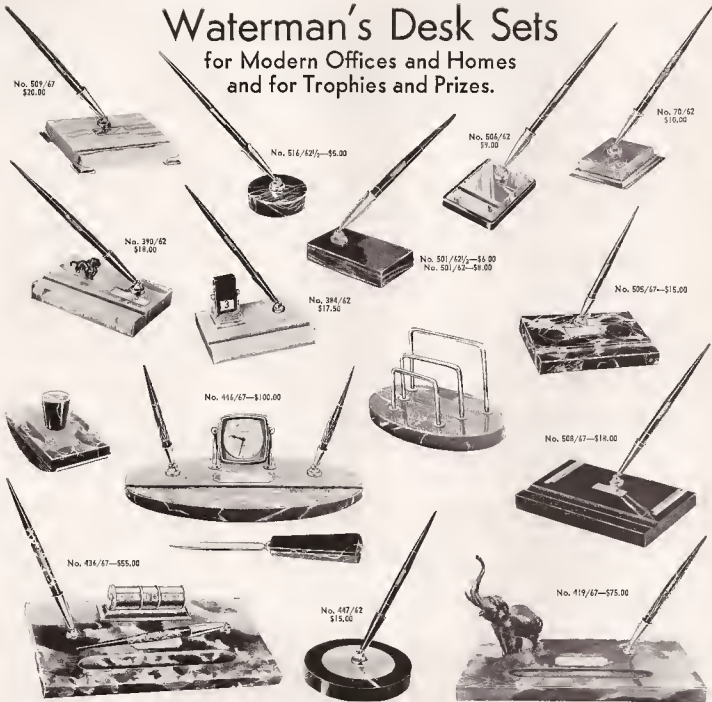
Waterman's *Ideal* Fountain Pens

A Catalogue of
FOUNTAIN PENS, PENCILS
DESK SETS & WRITING INKS
by
S. Waterman Co.



Waterman's Desk Sets

for Modern Offices and Homes
and for Trophies and Prizes.



No. 509/67—4x6 White Onyx, Belgian Black or African Brown base, chrome sheath, name plate and corner stands, Jet pen—\$20.00. Green Onyx base, gold filled sheath name plate and corner stands, pen to match—\$23.00.

No. 516/62½—3" Black and Gold Marble base, chrome sheath, Jet pen—Or Green Onyx base, gold-filled sheath, Brown pen—\$5.00.

No. 501/62—2½x4 Black Aregonite base, chrome sheath, Jet pen—Or Green Onyx base, gold-filled sheath, Green Pen—\$8.00.

No. 501/62½—Black and Gold or Belgian Black Marble, or White or African Brown Onyx base pens and trim to match—\$6.00.

No. 506/62—3x4 Sapphire Blue or Steel Grey glass mirror base, chrome sheath, Jet pen—Or Gold glass mirror base, gold-filled sheath, Jet pen—\$9.00.

No. 70/62—Green Onyx base, 3x3 gold-filled frame and sheath, Jade Green pen—\$10.00.

No. 390/62—Dachshund, on 4x6 White Onyx base chrome name plate, Jet pen and sheath—\$18.00.

No. 394/62—Jet Turn-Over Perpetual Calendar, on 4x6 White Onyx base, Jet pen and sheath—\$17.50.

No. 505/67—4x6 Black and Gold Marble, White Onyx or African Brown Onyx base, gold-filled pen sheath and name plate and pen to match—Or Belgian Black Marble base, chrome finish—\$15.00. With Brazilian Green Onyx base, gold-filled trim—\$18.00.

No. 446/67—Waltham 8-Day Clock, 7½x12 Black and Gold Marble base, sheath and name plate English gold finished, two pens, Letter Rack, Opener, Rocker Blotter—\$100.00.

No. 508/67—5½x8½ Belgian Black Marble base ornamented with a deep inlay of Red and White, chrome trimmed Jet sheath and chrome name plate, Jet pen—\$18.00.

No. 436/67—Gold-filled cylinder type Perpetual Calendar, name plate and sheath, 7x13 Brazilian Green Onyx base, two pens to match, as illustrated—\$55.00. With a White Onyx, Black and Gold Marble or Belgian Black Marble base—\$50.00.

No. 447/62—A new and most unusual design in a desk set, 5 inches diameter, Black Marble and White Onyx base, Jet pen and sheath—\$15.00.

No. 419/67—Elephant, 8 in. high, Green Colored Solid Bronze, 7x13 Green Onyx base, sheath and name plate Matt Green Gold finished, pen to match—\$75.00.

We also have various other styles of desk sets especially appropriate for trophies or prizes.

Waterman's Ideal Fountain Pens

THE DeLUXE INK-VUE

(Available with nib actions described on center spread)



DeLuxe Ink-Vue
Emerald-Ray
Pen, \$1.50

DeLuxe Ink-Vue
Emerald-Ray
Pencil, \$4.00



DeLuxe Ink-Vue
Jet Pen,
\$8.50

DeLuxe Ink-Vue
Jet Pencil,
\$4.00



DeLuxe Ink-Vue
Copper-Ray
Pen, \$8.50

DeLuxe Ink-Vue
Copper-Ray
Pencil, \$4.00



The DeLuxe INK-VUE is the largest and finest of Waterman's new visible ink pens. As in all pens of this type the ink supply is visible at all times and thus tells you when to refill. Trouble-making springs, pistons and packing usually found in a visible ink pen are absent in an INK-VUE pen! The patented "Double Action Lever" assures simple and positive filling—and locks down without ejecting ink. This feature and the simplified design—allowing a bigger reservoir—permit INK-VUE pens, size for size, to carry more ink than any other visible ink pen.

Waterman's Ideal Fountain Pens

THE STANDARD INK-VUE

(Available with nib actions described on center spread)



No. 84 E Emerald-Ray
Ink-Vue Pen (with gold-
filled mountings), \$4.00
No. 85 E Emerald-Ray
Ink-Vue Pencil (gold-
filled mountings) \$3.00

No. 84-C Copper-Ray
Ink-Vue Pen, \$6.00

No. 85-C Copper-Ray
Ink-Vue Pencil, \$3.00

No. 84-S Silver-Ray
Ink-Vue Pen, \$6.00

No. 85-S Silver-Ray
Ink-Vue Pencil, \$3.00

No. 84-J Jet
Ink-Vue
Pen, \$5.00

No. 85-J Jet
Ink-Vue
Pencil, \$3.00

No. 84-R Emerald-Ray
Ink-Vue Pen (with
chrome mountings), \$5.00
No. 85-R Emerald-Ray
Ink-Vue Pencil to match
above pen, \$3.00

Waterman's Ideal Fountain Pens

THE LADY PATRICIA

(Available with nib actions described on center spread)

INK-VUE

REGULAR TYPE



Lady Patricia
Ink-Vue, Black Lace,
Pen, \$5.00

Lady Patricia
Ink-Vue, Sunset,
Pen, \$5.00

Lady Patricia
Ink-Vue, Mist,
Pen, \$5.00

Lady Patricia
Ink-Vue, Black Lace,
Pencil, \$3.00

Lady Patricia
Ink-Vue, Sunset,
Pencil, \$3.00

Lady Patricia
Ink-Vue, Mist,
Pencil, \$3.00

Lady Patricia
Onyx
Pen, \$8.00

Lady Patricia
Onyx
Pencil, \$3.00

Lady Patricia
Persian
Pen, \$8.00

Lady Patricia
Persian
Pencil, \$3.00

Lady Patricia
Jet
Pen, \$5.00

Lady Patricia
Jet
Pencil, \$3.00

Lady Patricia
Moss Agate
Pen, \$5.00

Lady Patricia
Moss Agate
Pencil, \$3.00

The Lady Patricia is designed from cap to tip for the modern woman. It is not only a perfect writing instrument but it is attractive enough to be used as a prized accessory in her handbag. Dainty, jewel-like design. Slender grip. The smart clasp secures Lady Patricia upright in any handbag. Polished disc on top of cap for engraving.

The Lady Patricia Ink-Vue has all the beauty of design of the Regular Type of Lady Patricia and, in addition, embodies Waterman's patented Ink-Vue features—that tell when to refill pen. Easy to fill. Larger ink supply.

A Waterman's Point for Every Hand

WATERMAN'S POINT



No. 7-J Jet
Pen, \$7.00
No. 7-J Jet
Pencil, \$3.00



No. 7-E
Emerald Ray
Pen, \$7.00



No. 17-E
Emerald Ray
Pencil, \$3.00



Waterman's
Junior Jet
Pen, \$2.50



Waterman's
Junior Jet
Pencil, \$1.00

NOTE—The Junior Pen comes only with Fine, Medium, Coarse or Stub points.



PURPLE—Stiff fine
Writes a fine, uniform line. Ideal for Gregg shorthand. Firm enough for carbon copies. Writes even finer on back.



PINK—Flex-fine
An unusually smooth flexible-fine point. It will shade at any angle. For Pileon shorthand and other systems requiring shading.



BROWN—Fine
A finely tapered point for general use. Writes smoothly with moderate flexibility. Good for bookkeeping and beginners at writing.



RED—Stiff fine
A splendid fine point for general use. Writes smoothly with moderate flexibility. Good for bookkeeping and beginners at writing.

Points described above are available for any Waterman pen. They are shaped, tempered and ground to deliver a line being different and identified by a color for easy selection, such as Fine Accountant, stiff and needle fine—And so on.

Thus, one may secure a point to suit any handwriting, Stenography, Manifolding, Music Writing, Sketching, etc.

WHY WATERMAN'S PENS?

Waterman's Pens are made of the very finest of materials. Each Waterman's Pen is made of fine fountain pen making. Each Waterman's Pen embodies every modern feature that could possibly be desired—made, 14-kt. gold iridium tipped point—and its so-called "quick-starter"—writing instantly upon touching the paper.

All Waterman's—Regular Type and INK-VUE'S—write on unbreakable material and are perfectly balanced for the hand.

The name "Waterman's" on a fountain pen is a guarantee of quality.



Handwriting or Writing Vocation

T SELECTION CHART



Standard
correspond-
Signature
Medium flex-
writes a fine
line. Suits
the writer.



GREEN—Rigid
A durable stiff point
of medium width that
will not shade even
under pressure. Best
for carbon copy work.
Smooth, gliding point.



YELLOW—Rounded
Writes a bold line—a
fine line on back. For
bold signatures and left-
handed writers. Writes
smoothly on any paper
in any direction.



BLUE—Blunt
An improved stub,
slightly oblique. Makes
thick or thin strokes.
Liked by writers who
hold pen between first
and second fingers.

Waterman's in this catalogue except Waterman's Junior.
At a certain point action—each of the seven points
in this section. In addition, we make various special points
such as—Music Point—Oblique Stub, etc.
For writing or writing vocation—as Bookkeeping, Account-
ing, etc.

WE ARE PERFECT WRITERS

Waterman's materials and with a skill born of over a half-century
not only beautifully styled—from tip to cap—but
also enhance its writing service. Because of its perfectly
identical correct ink-feed—each Waterman's is a
perfect pen and without skipping or flooding.
—have an ample ink capacity. Holders are made of
comfortable, non-tiring writing.
—your guarantee of years of perfect writing service!



For every Water-
man's Fountain Pen
there is a perfectly
matching pencil.
And whether a foun-
tain pen is bought
singly—or forming a
set with a pencil—
it can be had en-
cased in a hand-
some, free, presen-
tation box.



No. 95-J Jet
Pencil, \$3.00



No. 5-J Jet
Pen, \$5.00



No. 91-G
Grey Pen,
\$5.00

No. 95-G
Grey Pencil,
\$3.00



No. 91-M
Moss-Agate
Pen, \$4.00

No. 95-M
Moss-Agate
Pencil, \$3.00



No. 91-J Jet
Pen, \$4.00
No. 075-J
Jet Pencil,
\$3.00

DeLuxe Ink-Vue Writing
Set in Emerald-Ray, \$12.50

Waterman's Ideal Fountain Pens

PENS—\$3.50

PENCILS—\$1.50

REGULAR TYPE OF PEN
GOLD-FILLED MOUNTED

Pens on this page may be had with any of the points described on center spread—but for the Purple, Yellow or Green point there will be an extra charge of 50c.



No. 92-S
Steel Quartz
Pen, \$3.50

No. 92-G
Green Pearl
Pen, \$3.50

No. 92V-B
Black Pearl
Pen, \$3.50

No. 92V-C
Claret
Pen, \$3.50

No. 92V-G
Green Pearl
Pen, \$3.50

No. 92V-J
Jet Pen,
\$3.50

No. 92V-S
Steel Quartz
Pen, \$3.50

No. 92-B
Black Pearl
Pen, \$3.50

No. 92-J
Jet Pen,
\$3.50

No. 91-S
Steel Quartz
Pencil, \$1.50

No. 91-G
Green Pearl
Pencil, \$1.50

No. 91V-B
Black Pearl
Pencil, \$1.50

No. 91V-C
Claret
Pencil, \$1.50

No. 91V-G
Green Pearl
Pencil, \$1.50

No. 91V-J
Jet Pencil,
\$1.50

No. 91V-S
Steel Quartz
Pencil, \$1.50

No. 91-B
Black Pearl
Pencil, \$1.50

No. 91-J
Jet Pencil,
\$1.50

The Nos. 92 and 92V pens—and the Nos. 3 and 3V pens on opposite page—represent the most outstanding values in fountain pens at their prices. They are perfect writing instruments in every particular. Pens are of Waterman's famous lever-filling type—a simple, efficient method of filling that has proven popular. They are especially suitable for boys and girls at school—and for the many adults who prefer a moderately priced pen in these sizes.

Waterman's Ideal Fountain Pens

PENS—\$3.00

PENCILS—\$1.25

REGULAR TYPE OF PEN
CHROME MOUNTED

Pens on this page may be had with any of the points described on center spread—but for the Purple, Yellow or Green point there will be an extra charge of 50c.



No. 3-J
Jet Pen,
\$3.00
No. 93-J
Jet Pencil,
\$1.25



No. 3-B
Black Pearl
Pen, \$3.00
No. 93-B
Black Pearl
Pencil, \$1.25



No. 3V-G
Green Pearl
Pen, \$3.00
No. 93V-G
Green Pearl
Pencil, \$1.25



No. 3V-S
Steel Quartz
Pen, \$3.00
No. 93V-S
Steel Quartz
Pencil, \$1.25



No. 3V-J
Jet Pen,
\$3.00
No. 93V-J
Jet Pencil,
\$1.25



No. 3V-C
Claret
Pen, \$3.00
No. 93V-C
Claret
Pencil, \$1.25



No. 3V-B
Black Pearl
Pen, \$3.00
No. 93V-B
Black Pearl
Pencil, \$1.25



No. 3-S
Steel Quartz
Pen, \$3.00
No. 93-S
Steel Quartz
Pencil, \$1.25



No. 3-G
Green Pearl
Pen, \$3.00
No. 93-G
Green Pearl
Pencil, \$1.25

Waterman's Ideal Inks



Well Top, 15c a bottle, these colors: No. 172 Blue Black; No. 282 Green; No. 322 Violet; No. 532 Red; No. 622 Blue; and No. 782 Jet Black.



Waterman's Ideal Inks are absolutely the best for your fountain pen and for general use. They are skillfully made from the very finest of raw materials—and are uniform in colors and free from clogging sediment.

Waterman's Blue Black and Jet Black Inks are permanent, non-fading record inks. Unequaled for use on bank checks, office records or wherever it is essential that the writing be preserved in a permanently legible state.

Waterman's Blue Ink writes a bright blue. Because it is so easily washed from hands or fabrics with ordinary soap and water it is the ideal ink for school use.

Waterman's Green, Violet and Red Inks are written in beautiful colors for many useful purposes in offices, schools and home.



Tip-Fill Bottle, 2 oz., 15c each; No. 172 Blue Black; No. 272 Green; No. 372 Violet; No. 572 Red; No. 672 Blue, and No. 772 Jet Black.

TIP-FILL BOTTLE

Above is shown Waterman's standard 2 oz. bottle—a good-looking and very convenient ink container. Its Tip-Fill feature is especially appreciated. When ink gets low, bottle may be tipped to new base (as shown above)—thus disapposing the ink and allowing a fountain pen or dip pen to get the last drop. Extra wide neck. Sealed with secure screw cap.

THE WELL TOP BOTTLE

You'll be intrigued by the convenience of this most unique fountain pen bottle! No matter how little ink remains in the bottle, it can be instantly transferred to the "well" at the top. And unlike other containers of this character, the "well" occupies the entire inside of the bottle's extra wide and deep neck.

Just turn the bottle upside down. Ink completely fills neck. Then flip bottle back to its base. Ink has remained in well—within easy reach of a fountain pen. A secure but easy-to-open screw cap seals the container.

COMMERCIAL SIZES WITH POUR-OUT

Business Offices, Schools and other large users of ink will find it decidedly economical to buy their Waterman's Ink in large containers equipped with our convenient, patented Pour-Out Device which allows small individual bottles to be quickly and cleanly filled as desired.



Blue Black, Jet Black, Blue, Green, Violet & Red Inks bear the same price, in these sizes:
 One Gallon, with Pour-Out Device \$4.00
 Half Gallon, with Pour-Out Device 2.25
 One Quart, with Pour-Out Device 1.25
 One Pint, with Pour-Out Device .75
 Half Pint, without Pour-Out Device .45

CORRESPONDENCE INKS

In six beautiful and unusual colors to match or harmonize with tinted personal correspondence papers — Astec Brown, Tropic Green, South Sea Blue, Patricia Purple, Spanish Tile and Jet Black. Daintily bottled — 15c each.



DE LUXE TIP-FILL

The sharp, iridescent facets of this 4 oz. container of Waterman's Blue Black Ink make it attractive enough for any office desk or home secretary. Tipped upside, it allows a pen to get all of the ink. Wide neck. Molded screw cap. Generous 4 oz. 25c



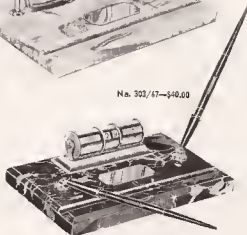
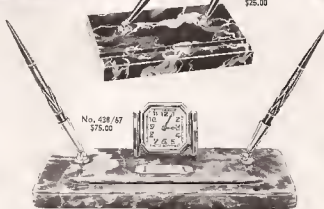
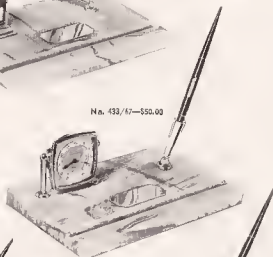
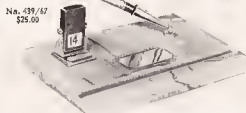
W. & A. Waterman Company

191 BROADWAY, NEW YORK

40 School St. BOSTON 129 So. State St. CHICAGO 609 Market St. SAN FRANCISCO 263 St. James St. MONTREAL 41 Kingsway LONDON, W. C. 2 6 rue Monsigny PARIS

Waterman's Desk Sets

for Modern Offices and Homes
and for Trophies and Prizes.



No. 503/62—3x4 1/2 White Onyx, African Brown Onyx or Black and Gold Marble base, gold-filled name plate and sheath—or Belgian Black Marble base, chrome name plate and sheath—pen to match base—\$10.00.

No. 502/62—3x4 1/2 White Onyx base, chrome or gold-filled decorative name plate and pen sheath—chrome or gold-filled trimmed Onyx pen—\$10.00.

No. 504/64—An appropriate set for equipping desks of office personnel. 4x6 Black Catalin base, Jet pen, chrome trimmed—\$10.00.

No. 511/62 1/2—3x4 African Brown Onyx base, gold-filled sheath, Brown pen—\$6.00.

No. 418/67—Jet Turn-Over Perpetual Calendar, 5x8 White Onyx or Black and Gold Marble base, Chrome trim and name plate. Jet pen and

sheath—\$22.00. With Belgian Black Marble or Green Onyx base, pen to match—\$25.00.

No. 448/67—Chrome Triangle Model Calendar, on 6x10, Belgian Black Marble base, chrome sheaths and name plate, Jet pens—\$40.00.

No. 444/62—Chrome Cylinder Typo Perpetual Calendar on 4x6 White Onyx base, Jet pen and sheath—\$15.00.

No. 439/67—Russet Metal Turn-Over Perpetual Calendar, gold-filled trim, sheath and name plate, 6x10 White Onyx base, Onyx pen—or Black and Chrome Calendar on Black and Gold Marble base—or all Chrome Calendar on Belgian Black Marble base—pen to match—\$25.00.

No. 525/67—5x8 Black and Gold Marble, Belgian Black Marble, White Onyx or African Brown Onyx base. Pens and sheaths to match—\$25.00.

No. 433/67—8-Day Waltham Clock, name plate and sheath in chrome, 6x10 White Onyx base, Jet pen (illustrated)—\$50.00. Same set in gold-filled, Green Onyx base, pen to match—\$55.00.

No. 510/62—A handsome modern set of Black Aragonite on 2 1/2 x 4 1/2 chrome metal base, Chrome sheath, Jet pen—\$10.00.

No. 438/67—Elgin 8-Day Clock, gold-filled finish, sheaths and name plate on 7x13 Green Onyx base, two pens to match—\$75.00.

No. 303/67—Gold-Filled Cylinder Typo Perpetual Calendar and name plate, Jet pens and sheaths, 6x10 Black and Gold Marble base (illustrated)—\$40.00. Same Calendar, gold-filled name plate and sheaths, Green Onyx base, pens to match base—\$45.00. Chrome Calendar and name plate, Belgian Black Marble base, Jet pens and sheaths—\$45.00.

We solicit your inquiries for desk sets designed to your order for special presentation.

